

Where can you contact us?

Blossom House (Alder Park)

Park Road, Waterloo, L22 3XE

0151 282 4973

childrenssl@alderhey.nhs.uk

All members of Sefton's Children's Speech and Language Therapy Service wear an identity badge. Please ask to see this before admitting a member of the team to your home.

If you have any comments or concerns, you can speak with a member of staff or contact our Patient Advice and Liaison Service (PALS Team) for Alder Hey.

[Patient Advice and Liaison Service \(PALS\)](#)
[- Alder Hey Children's Hospital Trust](#)

Please give or send any written compliments about the service to the Speech and Language Therapist you see or via the website.

[Send a message of thanks - Alder Hey Children's Hospital Trust](#)

© Alder Hey

Review Date: July 2028

PIAG 285

Attending appointments

The Speech and Language Therapy Service receives a high number of referrals and currently has a waiting list for a first appointment.

We have an '**opt in**' system. When your child is near the top of the waiting list you will be sent a letter asking you to contact us to book an appointment. If you do not respond we will assume your child no longer needs to be seen by the service and we will discharge your child.

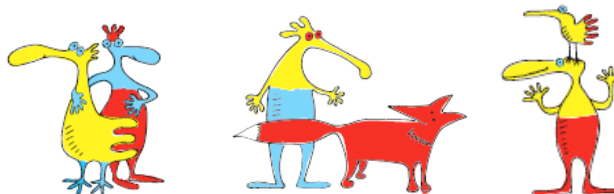
If you **cannot attend** for any reason, please contact us **before** the session. A new appointment can be arranged.

If your child is **not brought** to an appointment your child will be discharged.

If **2 consecutive appointments are cancelled** by you, we will **discharge** your child from the service.

Following discharge, a re-referral would be needed if you feel Speech and Language Therapy intervention is still required.

If you would like to discuss our attendance policy, please contact us.



Alder Hey Children's
NHS Foundation Trust

Sefton Children's Speech and Language Therapy Service



Information for parents
and carers



Introduction

Speech and Language Therapy (SaLT) is a specialist service that can help you support your child's speech, language and communication development.

We work closely with parents, carers and other professionals to provide assessment, advice and therapy. We have an open referral system with parental consent.

Where do we work?

We work in a variety of settings, including clinics, schools, nurseries, and in patient's homes. Our aim is always to work together to ensure you have the knowledge and skills to continue input with your child.

Who do we work with?

We can help children from birth to 18 years who have difficulties in the following areas:

- Listening and attention
- Play and interaction
- Understanding and using language
- Social communication
- Speech sound production
- Stammering
- Voice
- Eating, drinking and swallowing

How can we help?

What will happen on the first appointment?

This will last approximately 30 minutes and will involve a discussion with you about your child's development and an assessment of your child's communication skills. You will be asked to return a questionnaire before the appointment.

Assessment may include play, observation and looking at pictures and books where appropriate. Depending on the age of your child we may also carry out some formal assessments. We will discuss the outcome of the assessment with you, so that together we can decide on the best way to meet your child's needs.

Following this, you may be offered:

- Workshops for parents/other adults involved with your child
- Therapy in a group setting or on an individual basis
- Programs of therapy activities for home / nursery or school
- Advice and support for parents, carers and other professionals
- A referral on to other professionals

Your child may or may not require direct input from us.

We work through episodes of care; your child may need intervention for their current communication need and then come back into the service at a later date if further intervention is needed.

Within an episode of care, we aim to train the key adults to enable them to continue to support their child's communication skills daily at home, school or nursery.

How you can help your child before your appointment:

You can ask your child's nursery or school for any ideas to try at home, speak to their teacher or SENCO.

If your child has been referred for Speech and Language Therapy assessment, we will send out some general information when we receive the referral.

You could look at these websites for more information and ideas:



Speech and Language UK
<https://speechandlanguage.org.uk/>

Alder Hey SLT page (Sefton)
<https://www.alderhey.nhs.uk/services/speech-and-language-therapy/community-speech-and-language-therapy-sefton/>

Please do not hesitate to contact us if you have any concerns or if you wish to make a referral.

This information can be made available in other languages and formats if requested.