

Reference Number: FOIAH2324/391
From: Private Individual
Date: 18 October 2023
Subject: Organisational Structure Charts for General Nursing, Primary Care, Mental Health, Learning Disabilities and Psychological Therapies

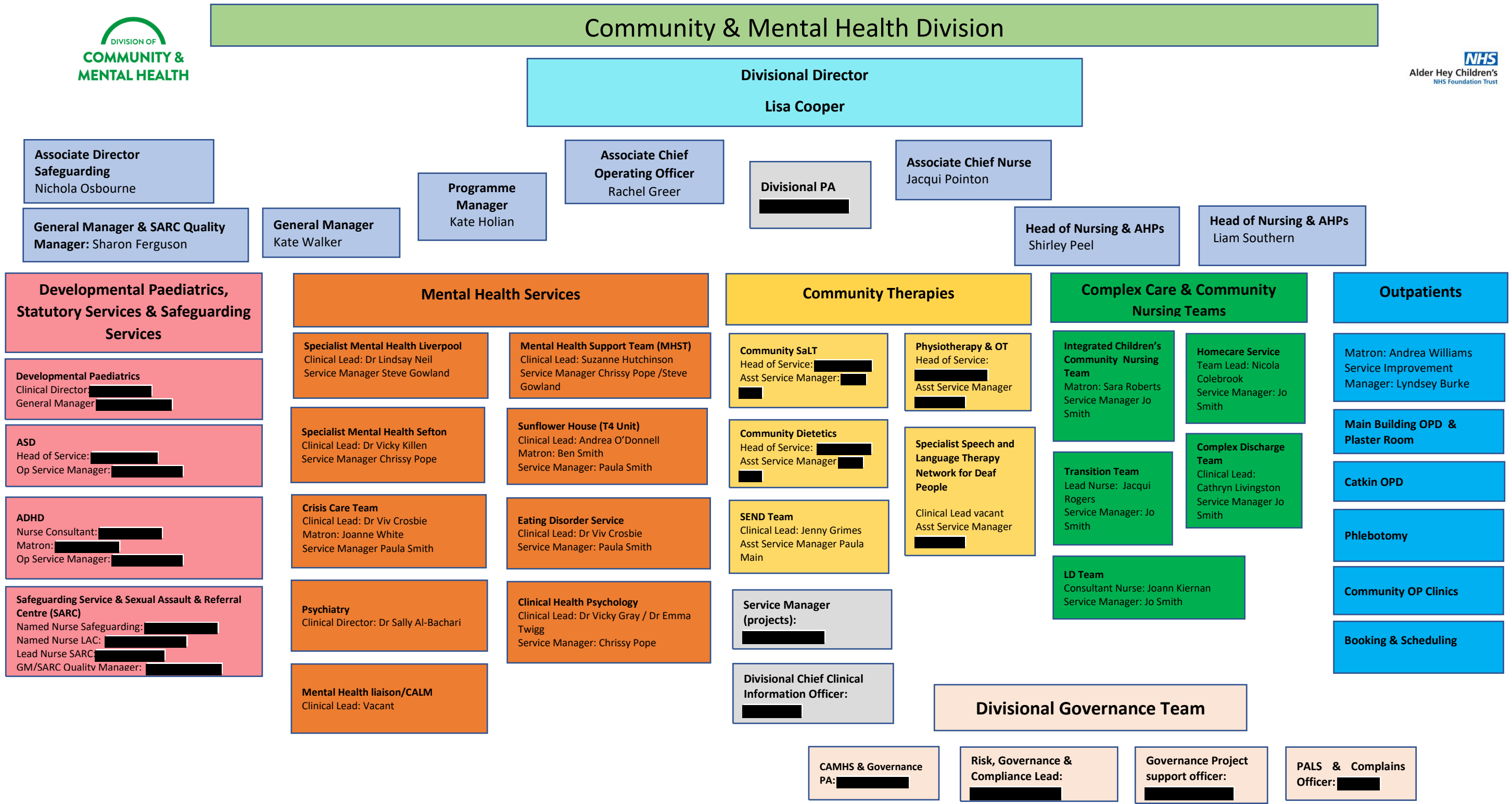
Q1 Please provide me with an up-to-date Organisational Structure chart showing Team Managers and Service Managers and their email addresses for General Nursing, Primary Care, Mental Health, Learning Disabilities and Psychological Therapies across your trust.

A1 See attachments –

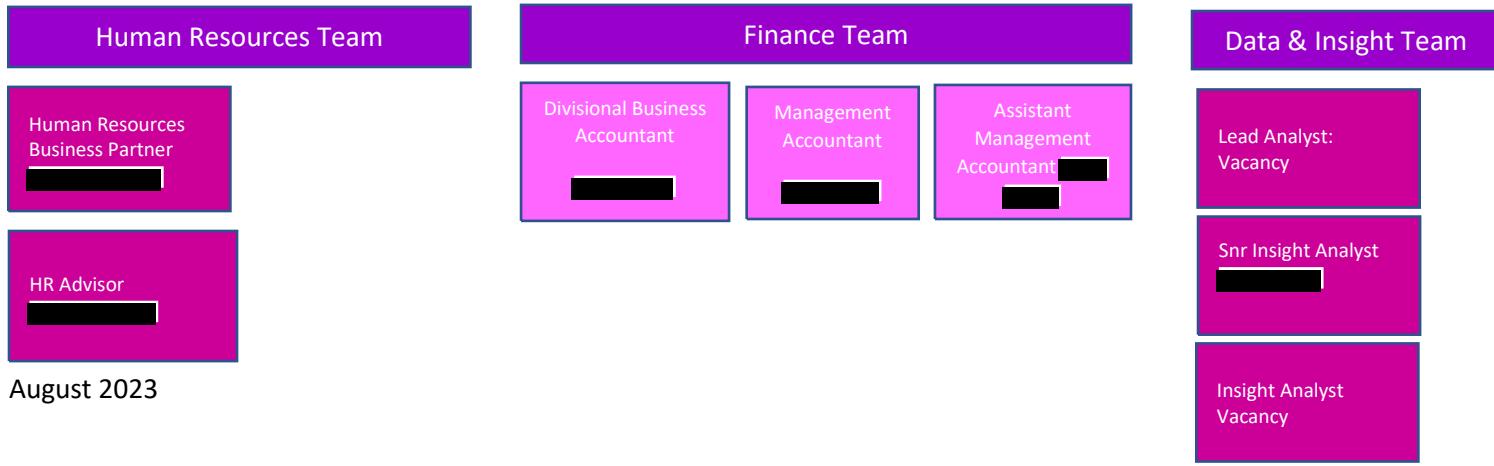
- [Surgery Structure - June 23_Redacted](#)
- [Med Div Organogram Sept 2023_Redacted](#)
- [CMH Organogram August 2023_Redacted](#).

We do not hold the breakdown requested. However, please see divisional structure charts which includes the requested information.

Staff names exempted under Section 40: Personal Information. Staff names exempted where they are unrelated to the above categories.



Corporate Services – Community & Mental Health Division



Last Updated: 06 09 2023 09:47
By: Sarah Balogh

Catherine Wardell
Associate Chief Nurse

Urmi Das
Divisional Medical Director

tbc
Associate Chief Operating Officer

Divisional Governance Lead

Divisional Clinical Advisory Roles

Associate Divisional Research Director

Divisional Chief Clinical Information Officer

Medical Care – Cancer Services, Specialist & Complex

Head of Nursing

General Manager

Clinical Director

Cancer Services

Specialist Care

Complex Care

Cancer Haem Lead nurse

Service Manager

Matron

Service Manager

Service Manager

Matron

3B Ward Manager

Assistant Service Manager

MDU Ward Manager

3C Ward Manager & Renal Unit

Assistant Service Manager

Assistant Service Manager

4B Ward Manager

Operational Manager

TBC Operational Manager

Diagnostics and Clinical Services

General Manager

Clinical Director

Head of Nursing

Radiology / Imaging

Therapies

Service Manager

Clinical Director

Service Manager

Head of Physio & OT

Operations Manager

Clinical Manager

Assistant Service Manager

Speech & Language Therapy (SALT)

Pharmacy

Interim Chief Pharmacist

Head of Pharmacy

Laboratory Medicine

Clinical Director

Laboratory Medicine Manager

Urgent Care – Gen Paeds, Diabetes and ED

Gary Barker-Begley
Head of Nursing

Dr Bimal Mehta
Clinical Director

Sian Calderwood
General Manager

Alison Barben
Acute Care Matron 4C, Diabetes, General Paediatrics

Specialty Manager

Ward Manager 4C

Specialty Manager

Operational Manager

Junior Doc Rota Team Leader

Emergency Department

Diabetes

Mark Deakin & Rachel Mulholland
Gen Paeds

Lead nurse for Palliative Care & Oncology Outreach

Bereavement Services Team Leader

Palliative Care

Infectious Disease and Microbiology

Haematology & Oncology

Immunology & Infectious Diseases Specialist Nurse

Metabolic Diseases

Rheumatology

Gastroenterology

Respiratory

LTV

TBC Neurology

Endocrinology

Allergy/Dermatology

Nephrology

Clinical Respiratory Nurse Manager

Bed Management / Response

Bed Management

Response Team

Physiological Diagnostics

Service Manager

Assistant Service Manager

Neurophysiology (EEG)/ Sleep Physiology

GI Physiology

Respiratory Physiology

Professional Services Manager

Clinical Services Manager

Chief Pharmacy Technician

Oncology Services

Pharmacist for Quality and Safety

Pharmacy Procurement

Aseptic Services Manager

Haematology

Quality Lead

tbc Microbiology

Histopathology

Biochemistry

Support Services

Governance Team

Risk and Governance Lead

PALS and Complaints Officer

Risk and Governance Co-ordinators

Finance Team

Divisional Business Accountant

Management Accountant

Management Accountant

Assistant Management Accountant

Assistant Management Accountant

Human Resources

Human resources Business Partner

HR Manager

HR advisor

Divisional PA

Lead Analyst

Project Manager

Chair of CDEG Committee (NOT employed by pharmacy)

