

ISSUE 3 - March 2023

 AlderHeyHospital  @AlderHey



Multi Use Games Area (MUGA) Nears Completion

The MUGA is now built and is due to be operational as soon as lighting is connected which is imminent. The MUGA will be operational 9am-10pm. A key feature of the park restoration plan from the beginning, the MUGA includes a basketball court and a 5-a-side football pitch.

COME AND HEAR MORE - Community Drop-In Days

Thank you to all those who attended the public meeting hosted by Liverpool City Council at Alder Hey in December 2022. We hope the meeting was helpful and a key step to moving forward together to create a park we can all be proud of.

Prior to this the community drop-in sessions in November provided us with an opportunity to answer questions and share our wider plans for our campus. A further session took place on the 18th March.

During Alder Hey's Board Meeting in February
Chair Dame Jo Williams

apologised for the delay in returning the Park back to the Community saying: "I can hear the frustration and anger in terms of what's happened. I do recognise it's been a long and extended period of time. Nevertheless, I can understand how frustrating it can be, I am sorry that has happened.

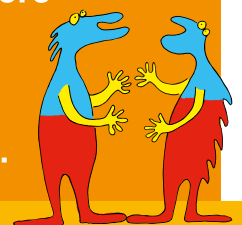
"Make no mistake, we know this is Liverpool Council's and the community's park. We want to work with local people to make a place where all generations can have a safe and nice place to be."

We are committed to holding more community

drop-in sessions to update on progress in the park and in response to some of the feedback you give us. In the meantime keep up to date with latest news via our website (www.alderhey.nhs.uk) or contact us directly at SpringfieldPark@alderhey.nhs.uk.

New footpaths

We have recently created footpaths connecting to the park. These paths are a planned part of the development of the park and were included within the planning application.



Get Involved! Help us develop a park that's right for you!

Contact SpringfieldPark@alderhey.nhs.uk

Visit www.alderhey.nhs.uk for news about Alder Hey and Springfield Park!

Demolition Begins



We were delighted to begin demolition works on the old Catkin building in February. The demolition works are set to be completed by April. The land will then be flattened and the final phase of parkland restored.

The area where the Catkin building sits will become home to a new children's play area. The wheelchair

access seesaw kindly donated by Friends of Springfield Park will be relocated from the old playground to sit alongside additional accessible equipment within the new play area.

The Substation 5 building which was used to provide power to the Catkin building will also be demolished. Liverpool City Council and

Alder Hey have seriously considered options for keeping the substation following requests from members of the local community. Due to the substation not forming part of the approved planning requirement for the Park alongside the need to demolish it to enable the return of 9.4 hectares of parkland to the community, the decision was taken to not retain the building.

Surgical NICU

Enabling works have started and main construction will soon begin on our new specialist surgical NICU, the first of its kind in the country. The building is expected to open in late 2024.



Catkin and Sunflower House

Community clinics are now taking place in our new Catkin Centre. Patients will be moving into Sunflower House – our new 12-bed mental health inpatient unit for children aged 5-13 - later this month.



Get Involved! Help us develop a park that's right for you!

Contact SpringfieldPark@alderhey.nhs.uk

Visit www.alderhey.nhs.uk for news about Alder Hey and Springfield Park!