

Pharmacy Department

Parent / Carer / Patient Administration of Medication during the Hospital Stay

This leaflet only gives general information. You must always discuss the individual treatment of your child with the appropriate member of staff. Do not rely on this leaflet alone for information about your child's treatment.

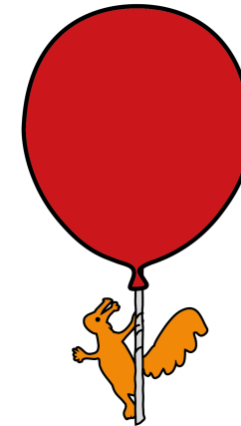
This information can be made available in other languages and formats if requested

Alder Hey Children's NHS Foundation Trust
Eaton Road,
Liverpool
L12 2AP

Tel: 0151 228 4811
www.alderhey.nhs.uk



© Alder Hey Review Date: September 2024 PIAG: 381



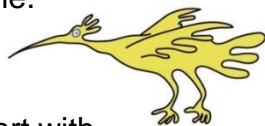
Information for patients,
parents and carers

What is parent/carer/patient administration of medication?

Parent / carer administration of medication refers to parents / carers (or patients) continuing to administer medication to their child while they are in hospital, like they do at home.

What will happen?

Your own medicines, if suitable, will be used to start with. This allows you or your carer to continue with familiar medicines and containers and avoids waste.



If more medicines are needed, or any different medicines are started, they will be supplied by the hospital pharmacy. All the medicines you take will have a label with full instructions for use.

You will be expected to inform your nurse of the name and quantity of the medicine given at each dose time. This enables the nurse to accurately assess and document your treatment throughout your hospital stay.

If any medicines are changed whilst you are here, this will be communicated to you by the team. If you are giving a different medicine or dose, always confirm this with the nurse to document at each dose time.

If you are running low on your supply of medicines and can't bring in more from home, inform the nurse / pharmacy within a suitable timeframe before medicines run out completely.

If medicines brought from home are not suitable for use, then let your nurse know this he/she will return them to pharmacy to destroy them.

Why should I take part?

Self-administration helps to improve knowledge of your medicines and the reasons for taking them, so that you will be able to manage better after you have been discharged from the hospital.

If none of your medicines have been changed, it allows you to continue taking your medicines as you were used to doing at home.

If you will be administering medicines at home, it allows you to practice this as much as possible while you are in hospital.

If you are used to taking / giving long term medication and the timing of that medication needs to be very precise, by administering those medications yourself it may avoid doses being delayed.

Do I have to take part?

You do not have to take part, even if asked. If you choose not to take part, the nurse will administer your medicines in the normal way, and give you or your carer information about them when you go home.

You or your carer can also change your mind about self-administration whilst you are in hospital. If you wish to start or stop being involved just ask your nurse.

Or if the medical team decide that it is no longer appropriate for you to continue with self-administration, they may decide that supervised administration is more suitable for the current plan of treatment and patient needs.

Will I self-administer all my medicines?

The nurse may still give you some medicines whilst you are in hospital. These may include injections (unless you or your carer normally give them at home) and some medicines that are not likely to continue when you go home.

For some patients who have injections at home, you may be allowed to self-administer these when in hospital, whilst the nurse administers the medications taken by mouth. If this is the case, the nurse will discuss with you how these can be stored safely.



Where can I get further information about my medicines?

If you agree to take part, a nurse or member of the pharmacy staff will explain your medicines and why they are being used. You will be given a written version of this information.

A more detailed Medicine Information Card can be supplied if you would find this useful, or if your medicines have changed.

All your medications will have instructions on the labels, and you must take them as instructed on the labels. You must speak to the nurse if you forget to take your medicines at the right time.

Where will I store my medicines?

All of your regular medicines will be stored in a medicine locker beside your bed, except those that need to be in a fridge.

You or your carer will be given the key that only opens your locker. It is the responsibility of whoever holds the key to keep it out of sight, so that other patients or visitors cannot access it.

Tell the ward staff immediately if anyone tries to take your key or medicines. You must never share your medicines with anyone else.

What if I need to leave the ward?

If you are a patient self-administering your medicines and you leave the ward when medicines may be due, you must communicate with your nurse to agree a time when the medicines will be administered.

You should hand your key to your nurse before leaving and collect the key when you return. Please remember to return your key when you are discharged.

If you are a carer administering medicines, you should return your key when you leave the ward. You will also need to tell the nurse looking after your child which medicines have been given, so they do not repeat the same doses.

When you return to the ward, find out from the nurse which medicines have already been given before starting again.

Do all wards allow Patient/carer led administration?

No. Although most wards do allow patient / carer led administration, certain areas such as intensive care require one to one nursing with strict nurse led medicine administration and documentation.

If you are transferred to a different ward resulting from a change in situation or clinical condition, you must allow a nurse to take over this role. The hospital has a duty of care to all patients and this decision must be respected to meet your specific needs and treatment plan whilst in hospital.

Do I have to sign anything?

Yes. When you are introduced to the scheme, a nurse or member of pharmacy staff will explain the system to you and ask you if you wish to take part.

If you do, you will be asked to sign a consent form. You do not have to take part. You can also withdraw from the scheme at any time.

N.B.

We strive to uphold the privacy and dignity of all of our patients and their families. However, the patient specific lockers that your medication will be kept in are at the bedside locker by your child's bed.

It will be necessary for pharmacy staff to gain access to this locker to review and top up the medication. Staff will of course ask your permission before doing so and aim to cause minimum disruption.

