

Department of Pharmacy

Levomepromazine

Information for patients, parents and carers

Why is it important for my child to take this medicine?

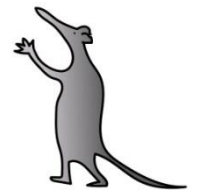
Levomepromazine is used as an anti-sickness medication and is given to prevent or stop episodes of nausea and vomiting. It is usually given with another anti-sickness medication if needed.

What preparations of Levomepromazine are available?

Levomepromazine is available as a 25mg tablet that can be halved or quartered for smaller doses, and a 5mg/5mL oral suspension. The oral suspension may have a short expiry date.

When should I give levomepromazine?

Levomepromazine can be taken a maximum of twice daily, when required.



How much should I give?

The prescribed dose of levomepromazine varies according to a child's body weight. You should give your child exactly what it says on the label.

How should I give it?

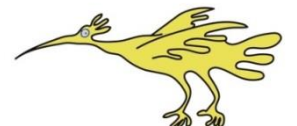
The oral suspension can be given from a spoon or using a marked oral syringe. It may be given by mouth or down a feeding tube if your child has one. The tablets, once quartered or halved, if necessary, can be swallowed with water, or crushed and added to a spoonful of soft food, like yoghurt or dispersed in water or fruit cordial.

When should the medicine start working?

The effects of levomepromazine should be felt within a couple of hours.

What if my child is sick (vomits)?

Do not give another dose, but continue when the next dose is due.



What if I give too much?

If you accidentally take too much you should immediately call Alder Hey for advice.

Are there any possible side effects?

The most common side effects of levomepromazine are drowsiness, dry mouth and a feeling of weakness.

Can other medicines be given at the same time as levomepromazine?

You should always tell the pharmacist or doctor if your child is on any other medication, including herbal medications as they may affect how levomepromazine works. Your pharmacist will then review any other medications your child may be on, to make sure levomepromazine can be used safely and effectively.

Is there anything else I need to know about this medicine?

Anyone who is taking levomepromazine should avoid alcohol, driving and operating machinery. Any adverse side effects other than those mentioned above should be reported to your GP, pharmacist or local hospital, as soon as possible. The oral suspension should be shaken well before administration.

Where should I keep this medicine?

You should keep this medicine in a cool dry place at room temperature, and out of the reach and sight of children.

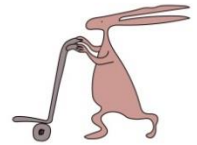
General advice about medicines

- This medication must only be used by the patient named on the label. Never give it to anyone else, even if their condition appears to be the same, as this could do harm.
- If you think someone else may have taken the medicine by accident, contact their doctor straight away.
- Make sure that you always have enough medicine, try to avoid running out, by requesting it from the hospital in advance.
- Make sure that the medicine you have at home has not reached the 'best before' or 'use by' date on the packaging. Be aware that levomepromazine oral suspension may have a short expiry date. Return unwanted medicines to your pharmacist to dispose of.
- Please remember to bring all medication with you at each hospital visit.
- This leaflet should be read with any manufacturers' patient information, if available. You must always discuss individual treatment with the appropriate member of staff.

How do I get further supplies of levomepromazine?

If you think you will run out of medication before your next appointment you will need to contact the hospital for another prescription.

If you have any problems please contact the Pharmacy Department.



Use of unlicensed medication for your child

This may be because there is not a licensed medicine for the illness your child has. Most medicines that are prescribed for a child will have a licence for use in adults. If a doctor believes a medicine is safe and effective for use in children, they may continue to prescribe it for a child. Your doctor will only suggest using a medicine for your child if they think that it is the best thing to help your child.

Who to contact for further details

If you have any questions about your medication whilst you are in hospital, please do not hesitate to ask one of the Pharmacy team, alternatively you can telephone us on 0151 252 5311.

Please note: Alder Hey Children's NHS Foundation Trust is neither liable for the contents of any external internet site listed, nor does it endorse any commercial product or service mentioned or advised on any of the sites.

This leaflet only gives general information. You must always discuss the individual treatment of your child with the appropriate member of staff. Do not rely on this leaflet alone for information about your child's treatment. This information can be made available in other languages and formats if requested.

Alder Hey Children's NHS Foundation Trust
Eaton Road
Liverpool
L12 2AP

Tel: 0151 228 4811
www.alderhey.nhs.uk

