

**Reference Number:** FOIAH2324/044  
**From:** Press/Media  
**Date:** 25 April 2023  
**Subject:** Speech and Language Therapy service provision

Please note, we have three services for Speech and Language Therapy. These are:

- a. Acute Speech and Language Therapy service
- b. Community Speech & Language Therapy Service
- c. Specialist Speech and Language Therapy Network for Deaf People which covers Cheshire and Merseyside. This is a regional service, hosted by Alder Hey.

Q1 Number of inpatient beds within your Trust.

A1 243-253 depending on the time of year and including Critical Care

Q2 Specialist SLT services provided by your Trust and age range(s) covered.

A2 Please note, we have three services for Speech and Language Therapy. These are:

- a. Acute Speech and Language Therapy service
- b. Community Speech & Language Therapy Service
- c. Specialist Speech and Language Therapy Network for Deaf People which covers Cheshire and Merseyside. This is a regional service, hosted by Alder Hey.

Therefore, for the all further questions we will breakdown the response per service for a, b and c as mentioned above.

a.

Specialist Speech and Language Therapy (SLT) services	Age Ranges covered
Cleft lip and palate	all ages, lifespan service
Craniofacial	0 – 18
Neuromuscle	0 – 18
Acquired communication disorders	0 – 18
In patients	0 – 18
CHI	0 – 18
LTV	0 – 18
Moebius	0 – 18
Voice	0 – 18

b. 0 – 18 years (up to 19 if in receipt of an EHCP, and up to 25 years with complex needs), Dysphagia and Speech, Language and Communication Needs (SLCN)

c. 0 – adulthood Specialist Service for d/Deaf people when diagnosed with permanent bilateral sensorineural severe-profound hearing levels

Q3 Number of patients seen in the past 12-months by each of your SLT specialist teams.

- A3 a. January – December 2022: 1,110 patients
- b. Information not held – the Trust does not routinely collate or hold this information centrally as part of its management or performance data.
- c. Information not held – the Trust does not routinely collate or hold this information centrally as part of its management or performance data.
- Q4 Where relevant, waiting times for initial appointment, intervention and follow-ups for each of your specialist SLT services.
- A4 a. We do not hold the information divided in this way. However, our waiting times are no longer than 18 weeks for all specialties
- b. Referral to first contact (average, end of March 23)  
Liverpool: 21.8 weeks  
Sefton: 21.4 weeks  
Dysphagia: 12 weeks maximum
- c. All referrals are seen within 18 weeks of receiving the referral in our team, across Cheshire and Merseyside. Intervention starts from this initial; there are no further waiting times.
- Q5 Hierarchy within your SLT service with job titles, whole time equivalents within each area of specialism and job bandings.

- A5 a. Acute Service
- Head of dept 8c – 1 WTE - dysphagia/ cleft
  - Deputy - 8a – 1 WTE - dysphagia/ Moebius/ craniofacial
  - Advanced practitioner – 8a 1 WTE – cleft
  - Band 7 - 4.7 WTE – cleft, craniofacial, CHI, neuromuscle, Long Term Ventilation (LTV), acquired, dysphagia, in patients, voice
  - Band 6 0.9 WTE – craniofacial/ dysphagia/ in patients, acquired

b. Community Service

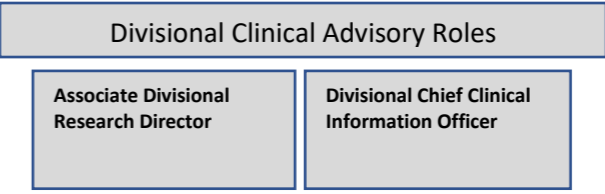
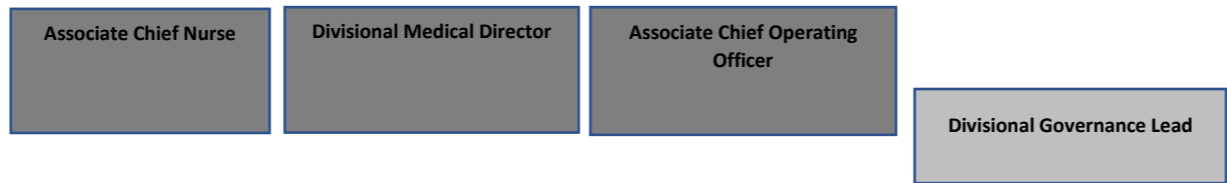
Title	AfC Banding	WTE (budget)
Head of Service	8b	1.0
Principal / Deputy to Head	8a	2.8
Principal SLT	8a	1.8
Highly Specialist SLT	7	15.32
Specialist SLT	6	35.98
SLT	5	7.5

c. Network for Deaf People

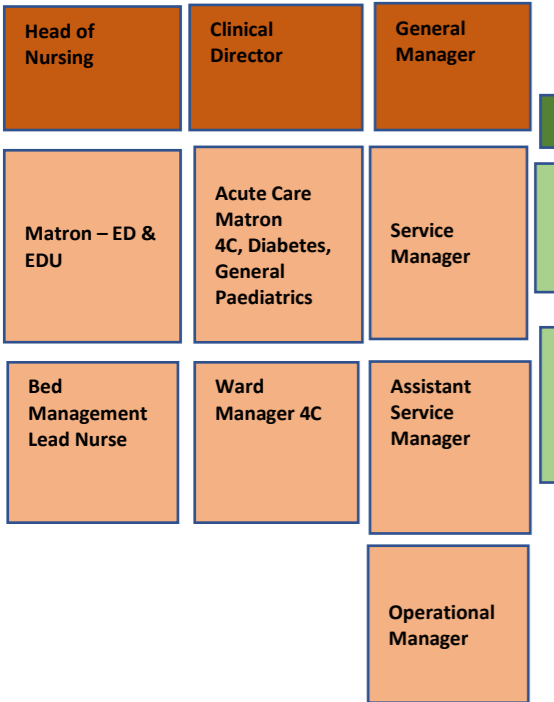
Title	AfC Banding	WTE (budget)
Consultant SaLT / Network Manager	8b	0.8
Principal SaLT / Deputy Manager	8a	0.8
Highly Specialist SLT	7	5.7
Admin/Project Support	4	1.0

Q6 Managerial hierarchy within your Trust and where Speech and Language Therapy sit within your structure

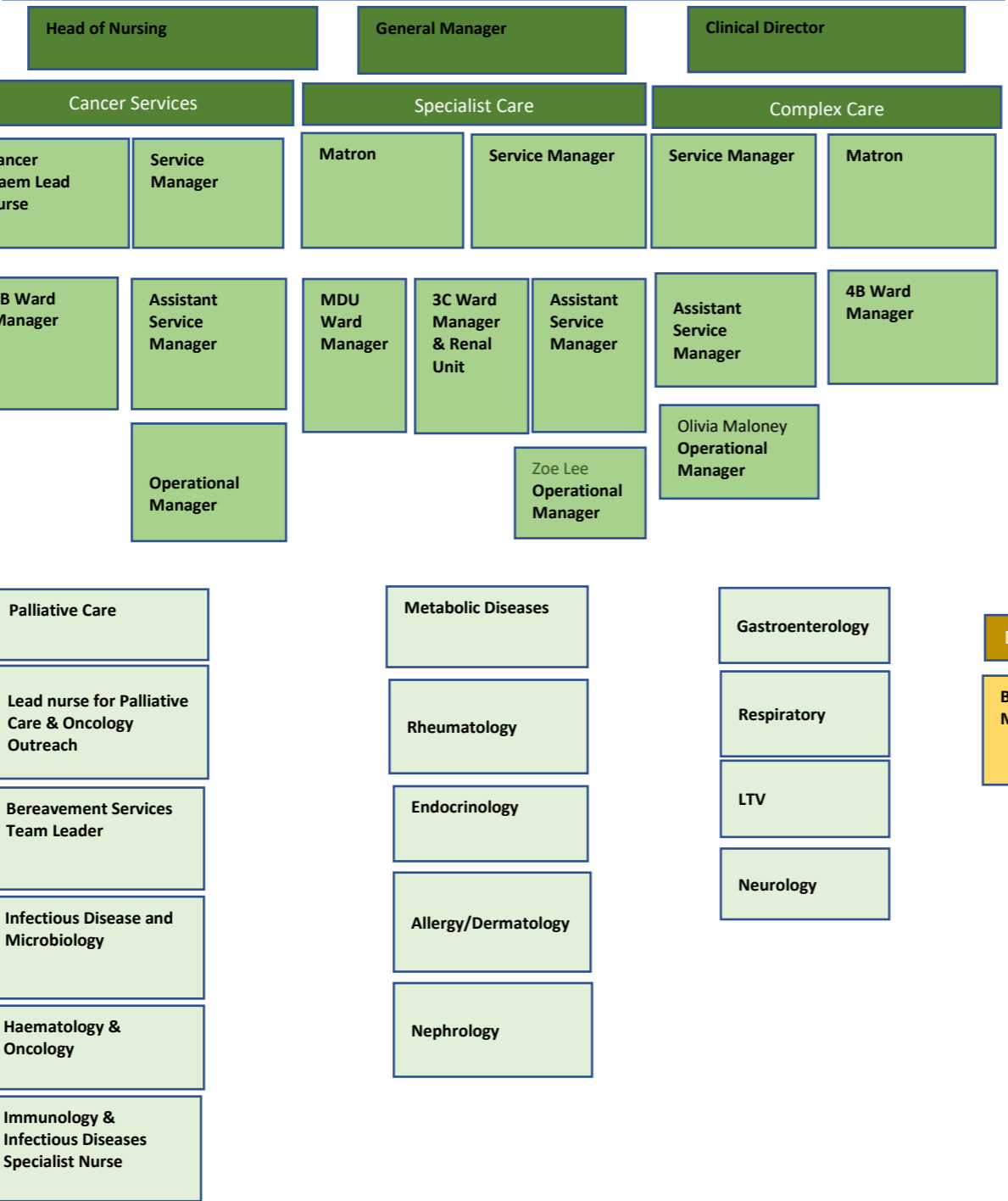
- A6
- a. Please see attached document: *Division of Medicine Organisational Chart*
  - b. The Community SLT Service sits within the Community & Mental Health Division
  - c. The SSaLT Network sits within the Community & Mental Health Division.



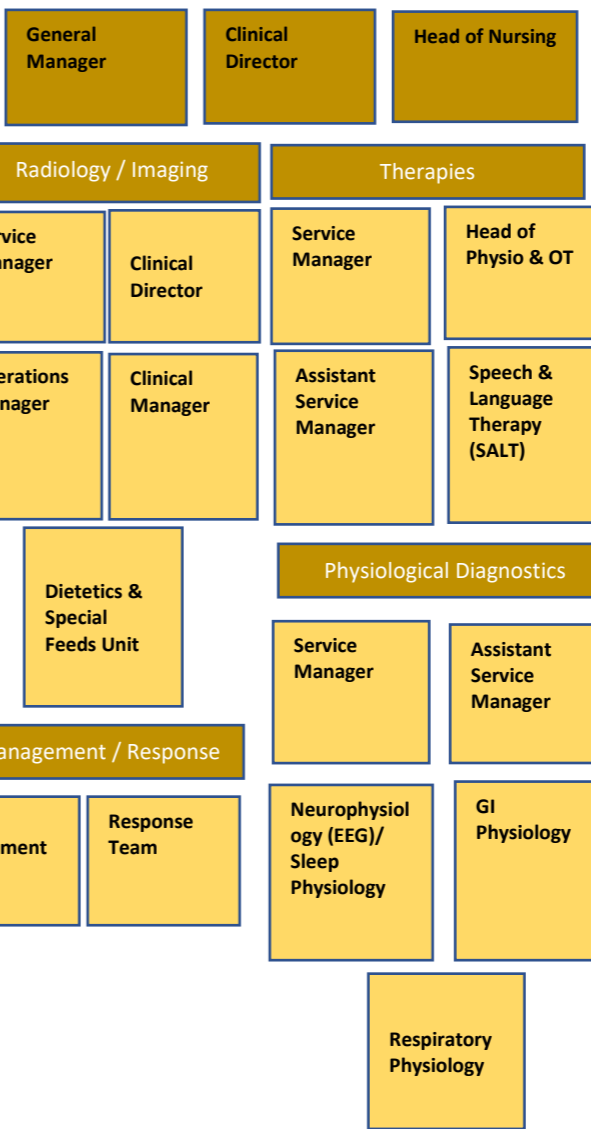
**Urgent Care – Gen Paeds, Diabetes and ED**



**Medical Care – Cancer Services, Specialist & Complex**



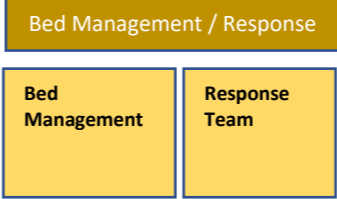
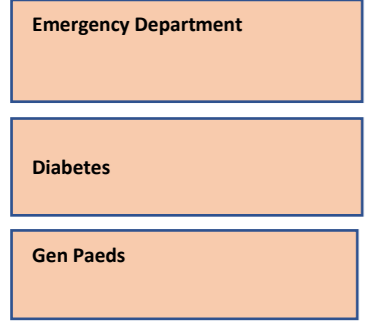
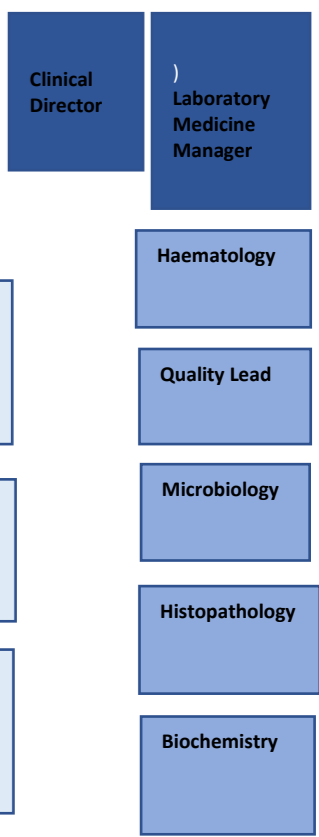
**Diagnostics and Clinical Services**



**Pharmacy**



**Laboratory Medicine**



**Support Services**

